



Price List - RRP 2023 - HiFi Racks

valid as from Oct 01, 2023

PAGODE° Signature MK II

NEW FEATURES
--- MK II ---
BETTER SOUND

- Finish: Canadian maple wood in seven colours - natural maple (P01), walnut (P02), makassar (P03), palisander (P04), cherry (P05), pearl white (P06) + pearl black (P07)
- Aluminum side pillars w/ wood-decor trim bars + logo insert silver-grey matt-anodized
- **Lightweight resonance-damped HCCT° honeycomb core shelves**
- Stainless-steel floor spikes with integrated floor protection plates
- Racks are shipped flat-packed



PAGODE° Signature MK II - Racks

(useable area WxD: upper levels 550 x 500 mm / bottom level 590 x 540 mm) – standard rack price

Item	Description	RRP
E11/45	45 cm high – 2 levels	6,600
E12/45	45 cm high – 3 levels	8,500
E11	60 cm high – 2 levels	6,800
E12	60 cm high – 3 levels	8,700
E13	60 cm high – 4 levels	10,700
E11/70	70 cm high – 2 levels	7,000
E12/70	70 cm high – 3 levels	8,900
E13/70	70 cm high – 4 levels	10,800
E14	85 cm high – 4 levels	11,000
E15	85 cm high – 5 levels	12,900
E14/110	110 cm high – 4 levels	11,700
E15/110	110 cm high – 5 levels	13,700
SR550	additional level	2,000

PAGODE° Signature MK II – side pillars + logo insert high-polished

Additional price – to be added to the standard rack price

Item	Article	RRP
45-2 P	side pillars 45 cm / logo insert high-polished (per pair)	900
60-2 P	side pillars 60 cm / logo insert high-polished (per pair)	1,000
70-2 P	side pillars 70 cm / logo insert high-polished (per pair)	1,100
85-2 P	side pillars 85 cm / logo insert high-polished (per pair)	1,200
110-2 P	side pillars 110 cm / logo insert high-polished (per pair)	1,500

Price List - RRP 2023 - HiFi Racks

valid as from Oct 01, 2023

PAGODE° Signature MK II – power amplifier platforms

- Finish: Canadian maple wood in seven colours - natural maple (P01), walnut (P02), makassar (P03), palisander (P04), cherry (P05), pearl white (P06) + pearl black (P07)
- Aluminum logo insert silver-grey matt-anodized
- **Lightweight resonance-damped HCCT° honeycomb core platform**
- Stainless-steel floor spikes with integrated floor protection plates



Item	Article	RRP
E21-L	Platform L (Useable area lengthwise - 540x590 mm)	3,000
E21-Q	Platform Q (Useable area crosswise - 590x540 mm)	3,000
E21-P	Logo insert high-polished	400



Price List - RRP 2023 - HiFi Racks

valid as from Oct 01, 2023

PAGODE° Master Reference MK II

NEW FEATURES
--- MK II ---
BETTER SOUND

- Finish: Canadian maple wood in seven colours - natural maple (P01), walnut (P02), makassar (P03), palisander (P04), cherry (P05), pearl white (P06) + pearl black (P07)
- Aluminum side pillars silver-grey matt-anodized
- **Resonance-damped 18 mm honeycomb core shelves w/ ceramic ball coupling**
- Stainless-steel floor spikes with integrated floor protection plates



PAGODE° 600 Master Reference MK II



(usable area 515 x 465 mm) – standard rack price

Item	Description	RRP
HD01/45 MR	45 cm high – 2 levels	13,800
HD02/45 MR	45 cm high – 3 levels	17,600
HD01 MR	60 cm high – 2 levels	14,200
HD02 MR	60 cm high – 3 levels	18,000
HD01/70 MR	70 cm high – 2 levels	14,800
HD02/70 MR	70 cm high – 3 levels	18,600
HD03 MR	85 cm high – 4 levels	22,400
HD04 MR	85 cm high – 5 levels	26,200
HD03/110 MR	110 cm high – 4 levels	24,200
HD04/110 MR	110 cm high – 5 levels	28,000
SR600 MR	additional level	3,800

PAGODE° 750 Master Reference MK II

(usable area 665 x 465 mm) - standard rack price



Item	Description	RRP
HD05/45 MR	45 cm high – 2 levels	17,600
HD06/45 MR	45 cm high – 3 levels	22,000
HD05 MR	60 cm high – 2 levels	18,000
HD06 MR	60 cm high – 3 levels	22,400
HD05/70 MR	70 cm high – 2 levels	18,600
HD06/70 MR	70 cm high – 3 levels	23,000
HD07 MR	85 cm high – 4 levels	27,600
HD08 MR	85 cm high – 5 levels	32,000
HD07/110 MR	110 cm high – 4 levels	29,400
HD08/110 MR	110 cm high – 5 levels	33,800

**Price List - RRP 2023 - HiFi Racks**

valid as from Oct 01, 2023

SR750 MR	additional level	4,400
----------	------------------	--------------

PAGODE° 1120 Master Reference MK II
(usable area 1035 x 465 mm) - standard rack price

Item	Description	RRP
HD11/45 MR	45 cm high – 2 levels	23,200
HD12/45 MR	45 cm high – 3 levels	31,000
HD11 MR	60 cm high – 2 levels	23,600
HD12 MR	60 cm high – 3 levels	31,400
HD11/70 MR	70 cm high – 2 levels	24,200
HD12/70 MR	70 cm high – 3 levels	32,000
HD13 MR	85 cm high – 4 levels	40,400
HD14 MR	85 cm high – 5 levels	48,200
HD13/110 MR	110 cm high – 4 levels	42,200
HD14/110 MR	110 cm high – 5 levels	50,000
SR1120 MR	additional level	7,800

**Price List - RRP 2023 - HiFi Racks**

valid as from Oct 01, 2023

PAGODE° Edition MK IINEW FEATURES
--- MK II ---
BETTER SOUND

- Finish: Canadian maple wood in seven colours - natural maple (P01), walnut (P02), makassar (P03), palisander (P04), cherry (P05), pearl white (P06) + pearl black (P07)
- Aluminum side pillars silver-grey matt-anodized w/ wood-decor trim bars
- **Resonance-damped 18 mm honeycomb core shelves w/ ceramic ball coupling**
- Stainless-steel floor spikes with integrated floor protection plates

PAGODE° 600 Edition MK II
(usable area 515 x 465 mm) – standard rack price

Item	Description	RRP
HD01/45 ED	45 cm high – 2 levels	17,000
HD02/45 ED	45 cm high – 3 levels	20,800
HD01 ED	60 cm high – 2 levels	17,400
HD02 ED	60 cm high – 3 levels	21,200
HD01/70 ED	70 cm high – 2 levels	18,000
HD02/70 ED	70 cm high – 3 levels	21,800
HD03 ED	85 cm high – 4 levels	26,400
HD04 ED	85 cm high – 5 levels	30,200
HD03/110 ED	110 cm high – 4 levels	28,200
HD04/110 ED	110 cm high – 5 levels	32,000
SR600 ED	additional level	3,800

PAGODE° 750 Edition MK II
(usable area 665 x 465 mm) - standard rack price

Item	Description	RRP
HD05/45 ED	45 cm high – 2 levels	21,800
HD06/45 ED	45 cm high – 3 levels	26,200
HD05 ED	60 cm high – 2 levels	22,200
HD06 ED	60 cm high – 3 levels	26,600
HD05/70 ED	70 cm high – 2 levels	22,800
HD06/70 ED	70 cm high – 3 levels	27,200
HD07 ED	85 cm high – 4 levels	31,800
HD08 ED	85 cm high – 5 levels	36,200
HD07/110 ED	110 cm high – 4 levels	33,600

All RRP prices including Australian 10% GST • We reserve the right to make amendments • Version: 01/10/2023

Audio Magic • Tel. +03 9489 5122 • info@audiomagic.com.au • www.audiomagic.com.au

**Price List - RRP 2023 - HiFi Racks**

valid as from Oct 01, 2023

HD08/110 ED	110 cm high – 5 levels	38,000
SR750 ED	additional level	4,400

PAGODE° 1120 Edition MK II
(usable area 1035 x 465 mm) - standard rack price

Item	Description	RRP
HD06/70 ED	70 cm high – 3 levels	27,200
HD12/45 ED	45 cm high – 3 levels	35,000
HD11 ED	60 cm high – 2 levels	27,600
HD12 ED	60 cm high – 3 levels	35,400
HD11/70 ED	70 cm high – 2 levels	28,200
HD12/70 ED	70 cm high – 3 levels	36,000
HD13 ED	85 cm high – 4 levels	44,400
HD14 ED	85 cm high – 5 levels	52,200
HD13/110 ED	110 cm high – 4 levels	46,200
HD14/110 ED	110 cm high – 5 levels	34,000
SR1120 ED	additional level	7,800

Price List - RRP 2023 - HiFi Racks

valid as from Oct 01, 2023



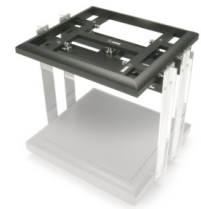
PAGODE° Edition MK II – side pillars + logo insert high-polished additional price – to be added to the standard price

Item	Description	RRP
45-4 P	side pillars 45 cm/logo insert high-polished	2,000
60-4 P	side pillars 60 cm/logo insert high-polished	2,200
70-4 P	side pillars 70 cm/logo insert high-polished	2,400
85-4 P	side pillars 85 cm/logo insert high-polished	2,700
110-4 P	side pillars 110 cm/logo insert high-polished	3,300

PAGODE° Edition MK II – Heavy-Duty option

as option - to be added to the standard rack price

- Higher load capacity of top-level – up to 120 kg
- **Strengthened 26 mm honeycomb core shelf w/ 5-point ceramic ball coupling**
- CERAPUC° 5-point support of top-level (HD1120: 10-point support)
- Available for top-level only



Item	Description	RRP
HD600ED option	Heavy-Duty 600 ED option	3,800
HD750ED option	Heavy-Duty 750 ED option	4,600
HD1120ED option	Heavy-Duty 1120 ED option	6,600

PAGODE° Edition MK II – power amplifier platform



- Finish: Canadian maple wood in seven colours - natural maple (P01), walnut (P02), makassar (P03), palisander (P04), cherry (P05), pearl white (P06) + pearl black (P07)
- **Resonance-damped 18 mm honeycomb core shelf w/ ceramic ball coupling**
- Stainless-steel floor spikes with integrated floor protection plate



Item	Description	RRP
HD09 ED-L	Platform 640-L (usable area lengthwise 465 x 515 mm)	6,000
HD09 ED-Q	Platform 640-Q (usable area crosswise 515 x 465 mm)	6,000
HD10 ED-L	Platform 790-L (usable area lengthwise 465 x 665 mm)	7,200
HD10 ED-Q	Platform 790-Q (usable area crosswise 665 x 465 mm)	7,200
HD09/10-P	Metal logo insert high-polished (additional price)	400

Price List - RRP 2023 - HiFi Racks

valid as from Oct 01, 2023

CARBOFIBRE° shelf for racks + amp platforms (as option for pagode° MKII)**additional price – to be added to the standard rack or amp platform price**

- Optional single-layer shelf for PAGODE° 600/750/1120 MKII (standard or Heavy-Duty option) + HD09/HD10 platforms
- **Single honeycomb core w/ carbon fibre layers all-round**
- Thickness **18 mm** (standard) or **23 mm** (Heavy-Duty) / two sizes available
- 1120 MKII series requires 2 pcs. CF600/CF600HD shelves per level

Item	Description	RRP
CF600opt	CARBOFIBRE° 600 standard - 515 x 465 x 18 mm	1,800
CF600HDopt	CARBOFIBRE° 600 Heavy-Duty - 515 x 465 x 23 mm	2,000
CF750opt	CARBOFIBRE° 750 standard - 665 x 465 x 18 mm	2,200
CF750HDopt	CARBOFIBRE° 750 Heavy-Duty - 665 x 465 x 23 mm	2,400



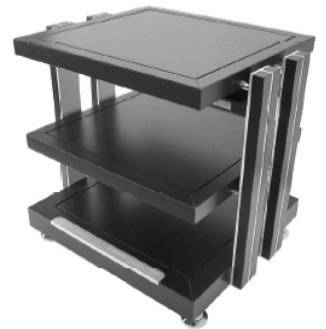
Price List - RRP 2023 - HiFi Racks

valid as from Oct 01, 2023



PAGODE° MKII CARBON Edition

- Finish: **CARBON** clad solid Canadian maple wood crossbars and side pillar decor trim (colour code: **P08**) frames,
- Resonance-damped 18 mm **Carbofibre°** shelves w/ ceramic ball coupling
- Metal logo insert + alu side pillars silver-grey anodized w/ CARBON decor trim bars
- **Cerabase° classic** interface feet as standard



PAGODE° 600 MKII CARBON Edition



(usable area 515 x 465 mm) – standard rack price

Item	Description	RRP
HD01/45 ED	45 cm high – 2 levels	38,400
HD02/45 ED	45 cm high – 3 levels	46,000
HD01 ED	60 cm high – 2 levels	40,200
HD02 ED	60 cm high – 3 levels	47,800
HD01/70 ED	70 cm high – 2 levels	42,000
HD02/70 ED	70 cm high – 3 levels	49,600
HD03 ED	85 cm high – 4 levels	58,000
HD04 ED	85 cm high – 5 levels	65,400
HD03/110 ED	110 cm high – 4 levels	61,400
HD04/110 ED	110 cm high – 5 levels	69,000
SR600 ED	additional level	7,600

PAGODE° 750 MKII CARBON Edition

(usable area 665 x 465 mm) - standard rack price



Item	Description	RRP
HD05/45 ED	45 cm high – 2 levels	43,600
HD06/45 ED	45 cm high – 3 levels	53,200
HD05 ED	60 cm high – 2 levels	45,600
HD06 ED	60 cm high – 3 levels	55,200
HD05/70 ED	70 cm high – 2 levels	47,800
HD06/70 ED	70 cm high – 3 levels	57,400
HD07 ED	85 cm high – 4 levels	67,600
HD08 ED	85 cm high – 5 levels	77,200

**Price List - RRP 2023 - HiFi Racks**

valid as from Oct 01, 2023

HD07/110 ED	110 cm high – 4 levels	71,800
HD08/110 ED	110 cm high – 5 levels	81,400
SR750 ED	additional level	9,600

PAGODE° 1120 MKII CARBON Edition
(usable area 1035 x 465 mm) - standard rack price

Item	Description	RRP
HD11/45 ED	45 cm high – 2 levels	61,200
HD12/45 ED	45 cm high – 3 levels	75,800
HD11 ED	60 cm high – 2 levels	63,600
HD12 ED	60 cm high – 3 levels	78,200
HD11/70 ED	70 cm high – 2 levels	66,000
HD12/70 ED	70 cm high – 3 levels	80,600
HD13 ED	85 cm high – 4 levels	95,800
HD14 ED	85 cm high – 5 levels	110,400
HD13/110 ED	110 cm high – 4 levels	100,600
HD14/110 ED	110 cm high – 5 levels	115,200
SR1120 ED	additional level	14,600

PAGODE° MKII CARBON Edition – side pillars + logo insert high-polished
additional price – to be added to the standard price

Item	Description	RRP
45-4 P	side pillars 45 cm/logo insert high-polished	2,000
60-4 P	side pillars 60 cm/logo insert high-polished	2,200
70-4 P	side pillars 70 cm/logo insert high-polished	2,400
85-4 P	side pillars 85 cm/logo insert high-polished	2,700
110-4 P	side pillars 110 cm/logo insert high-polished	3,300

PAGODE° MKII CARBON Edition – Heavy-Duty option**as option - to be added to the standard rack price**

- Higher load capacity of top-level – up to 120 kg
- Strengthened 23 mm **Carbofibre°** shelf w/ 5-point ceramic ball coupling
- **CERAPUC°** 5-point support of top-level (HD1120: 10-point support)
- Available for top-level only

Price List - RRP 2023 - HiFi Racks

valid as from Oct 01, 2023

Item	Description	RRP
HD600ED option	Heavy-Duty 600 ED option	5,800
HD750ED option	Heavy-Duty 750 ED option	7,000
HD1120ED option	Heavy-Duty 1120 ED option	9,000



PAGODE° MKII CARBON Edition – power amplifier platform

- Finish: **CARBON** cladded solid Canadian maple wood platform frame (colour code: **P08**)
- Resonance-damped 18 mm **Carbofibre°** shelf w/ ceramic ball coupling
- Metal logo insert silver-grey anodized
- **Cerabase° compact** interface feet as standard

Item	Description	RRP
HD09 ED-L	Platform 640-L (usable area lengthwise 465 x 515 mm)	13,000
HD09 ED-Q	Platform 640-Q (usable area crosswise 515 x 465 mm)	13,000
HD10 ED-L	Platform 790-L (usable area lengthwise 465 x 665 mm)	15,200
HD10 ED-Q	Platform 790-Q (usable area crosswise 665 x 465 mm)	15,200
HD09/10-P	Metal logo insert high-polished (additional price)	400

Price List - RRP 2023 - Alu side pillars

valid as from Oct 01, 2023

PAGODE° Master Reference MK II – alu side pillars

Finish: silver-grey anodized (prices per piece)

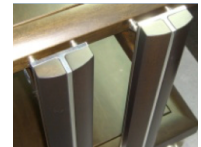
Item	Description	RRP
450MR.A	alu side pillar 45 cm – silver-grey anodized	400
600MR.A	alu side pillar 60 cm – silver-grey anodized	500
700MR.A	alu side pillar 70 cm – silver-grey anodized	600
850MR.A	alu side pillar 85 cm – silver-grey anodized	600
1100MR.A	alu side pillar 110 cm – silver-grey anodized	900

Finish: high-polished (prices per piece)

Item	Description	RRP
450MR.P	alu side pillar 45 cm – high-polished	800
600MR.P	alu side pillar 60 cm – high-polished	1,000
700MR.P	alu side pillar 70 cm – high-polished	1,100
850MR.P	alu side pillar 85 cm – high-polished	1,200
1100MR.P	alu side pillar 110 cm – high-polished	1,600

PAGODE° Master Reference MK II - wood decor trim for side pillars

Finish: Canadian maple wood in seven colours - natural maple (P01), walnut (P02), makassar (P03), palisander (P04), cherry (P05), pearl white (P06) + pearl black (P07)



Domed type for Master Reference racks (prices per set = set for 1 pillar)

Item	Description	RRP
450MR.W	wood decor trim set for 45 cm side pillar	600
600MR.W	wood decor trim set for 60 cm side pillar	600
700MR.W	wood decor trim set for 70 cm side pillar	600
850MR.W	wood decor trim set for 85 cm side pillar	700
1100MR.W	wood decor trim set for 110 cm side pillar	800

PAGODE° Edition MK II – alu side pillars

Finish: silver-grey anodized (prices per piece)

Item	Description	RRP
450ED.A	alu side pillar 45 cm – silver-grey anodized	400
600ED.A	alu side pillar 60 cm – silver-grey anodized	500
700ED.A	alu side pillar 70 cm – silver-grey anodized	600
850ED.A	alu side pillar 85 cm – silver-grey anodized	600
1100ED.A	alu side pillar 110 cm – silver-grey anodized	900

Finish: high-polished (prices per piece)

Price List - RRP 2023 - Alu side pillars

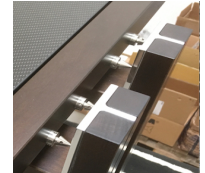
valid as from Oct 01, 2023

Item	Description	RRP
450ED.P	alu side pillar 45 cm – high-polished	800
600ED.P	alu side pillar 60 cm – high-polished	1,000
700ED.P	alu side pillar 70 cm – high-polished	1,100
850ED.P	alu side pillar 85 cm – high-polished	1,200
1100ED.P	alu side pillar 110 cm – high-polished	1,600

PAGODE° Edition MK II - wood decor trim for side pillars

Finish: Canadian maple wood in seven colours - natural maple (P01), walnut (P02), makassar (P03), palisander (P04), cherry (P05), pearl white (P06) + pearl black (P07)

Square type for Edition racks (prices per set = set for 1 pillar)



Item	Description	RRP
450ED.W	wood decor trim set for 45 cm side pillar	600
600ED.W	wood decor trim set for 60 cm side pillar	600
700ED.W	wood decor trim set for 70 cm side pillar	600
850ED.W	wood decor trim set for 85 cm side pillar	700
1100ED.W	wood decor trim set for 110 cm side pillar	800

Price List - RRP 2023 - Alu side pillars

valid as from OCT 01, 2023

CERABASE° classic
 MADE IN GERMANY

Load capacity: 500 kg (set of 4)

- **stainless-steel**, screwable, height-adjustable
- incl. wooden box + assembly accessories



Item	Description	RRP
cbs-4	Cerabase classic 4 [set of 4]	1,800
cbs-3	Cerabase classic 3 [set of 3]	1,400

CERABASE° compact
 MADE IN GERMANY

Load capacity: 500 kg (set of 4)

- **stainless-steel**, screwable, height-adjustable
- incl. wooden box + assembly accessories



Item	Description	RRP
cmp-4	Cerabase compact 4 [set of 4]	1,500
cmp-3	Cerabase compact 3 [set of 3]	1,200

CERABASE° slimline
 MADE IN GERMANY

Load capacity: 500 kg (set of 4)

- **stainless-steel**, screwable, **NOT** height-adjustable
- incl. wooden box + assembly accessories



Item	Description	RRP
slm-4	Cerabase slimline 4 [set of 4]	1,200
slm-3	Cerabase slimline 3 [set of 3]	900

CERAPUC°
 MADE IN GERMANY

Load capacity: 300 kg (set of 4)

- **stainless-steel**, screwable, height-adjustable
- incl. wooden box + assembly accessories



Item	Description	RRP
cpc-4	Cerapuc 4 [set of 4]	1,100
cpc-3	Cerapuc 3 [set of 3]	900

CERABALL°
 MADE IN GERMANY


Price List - RRP 2023 - Alu side pillars

valid as from OCT 01, 2023

Load capacity: 200 kg (set of 4)

- **stainless-steel**, screwable, height-adjustable
- incl. wooden box + assembly accessories

Item	Description	EUR	RRP
cb-4	Ceraball 4 [set of 4]		700
cb-3	Ceraball 3 [set of 3]		600

Price List - RRP 2023 - Alu side pillars

valid as from OCT 01, 2023

CERABASE° B&W D3/D4

 MADE IN GERMANY

 Special Cerabase version for **Bowers & Wilkins 800 D3+D4 series**

- suitable for 801D4, 802D4 & 803D4 Diamond
- suitable for 800D3, 802D3 & 803D3 Diamond
- stainless-steel, screwable, height-adjustable
- incl. wooden box



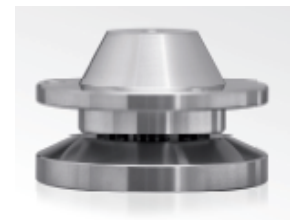
Item	Description	RRP
cbs-4 B&W D3/D4	Cerabase B&W D3/D4 [set of 4]	400

CERABASE° B&W D2

 MADE IN GERMANY

 Special Cerabase version for **B&W 800 D2 series**

- suitable for 800D2, 801D2, 802D2, 800D2 & 802D2 Diamond
- stainless-steel, screwable, height-adjustable
- incl. wooden box



Item	Description	RRP
cbs-4 B&W D2	Cerabase B&W D2 [set of 4]	400

CERA° thread adapters

 MADE IN GERMANY

 Suitable for **Cerapuc + Ceraball**

- stainless-steel
- overall length: 35 mm
- thread lengths: M10/M8 = 25 mm / M8 = 10 mm
- four different thread pitches available:
 - M10x1,50 mm** (for i.e. Magico, Vienna Acoustics)
 - M10x1,25 mm** (for i.e. Monitor Audio)
 - M10x1,00 mm** (for i.e. Paradigm)
 - M8x1,00 mm** (for i.e. KEF)



Item	Description	RRP
apt M10x1,50	Adapter M10x1,50 [set of 4] for i.e. Magico, Vienna Acoustics	400
apt M10x1,25	Adapter M10x1,25 [set of 4] for i.e. Monitor Audio	400
apt M10x1,00	Adapter M10x1,00 [set of 4] for i.e. Paradigm	400
apt M8x1,00	Adapter M8x1,00 [set of 4] for i.e. KEF	400

Price List - RRP 2023 - Alu side pillars

valid as from OCT 01, 2023

CERABASE° B&W D3/D4

 MADE IN GERMANY

 Special Cerabase version for **Bowers & Wilkins 800 D3+D4 series**

- suitable for 801D4, 802D4 & 803D4 Diamond
- suitable for 800D3, 802D3 & 803D3 Diamond
- stainless-steel, screwable, height-adjustable
- incl. wooden box



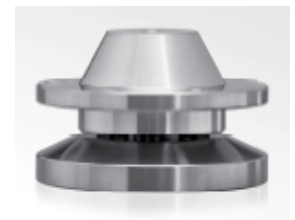
Item	Description	RRP
cbs-4 B&W D3/D4	Cerabase B&W D3/D4 [set of 4]	400

CERABASE° B&W D2

 MADE IN GERMANY

 Special Cerabase version for **B&W 800 D2 series**

- suitable for 800D2, 801D2, 802D2, 800D2 & 802D2 Diamond
- stainless-steel, screwable, height-adjustable
- incl. wooden box



Item	Description	RRP
cbs-4 B&W D2	Cerabase B&W D2 [set of 4]	400

CERA° thread adapters

 MADE IN GERMANY

 Suitable for **Cerapuc + Ceraball**

- stainless-steel
- overall length: 35 mm
- thread lengths: M10/M8 = 25 mm / M8 = 10 mm
- four different thread pitches available:
 - M10x1,50 mm** (for i.e. Magico, Vienna Acoustics)
 - M10x1,25 mm** (for i.e. Monitor Audio)
 - M10x1,00 mm** (for i.e. Paradigm)
 - M8x1,00 mm** (for i.e. KEF)



Item	Description	RRP
apt M10x1,50	Adapter M10x1,50 [set of 4] for i.e. Magico, Vienna Acoustics	400
apt M10x1,25	Adapter M10x1,25 [set of 4] for i.e. Monitor Audio	400
apt M10x1,00	Adapter M10x1,00 [set of 4] for i.e. Paradigm	400
apt M8x1,00	Adapter M8x1,00 [set of 4] for i.e. KEF	400

CARBOFIBRE° bases

CARBOFIBRE° isolation base

- Single-layer version for light to middle-weight components (up to 50 kg)
- **Single honeycomb core w/ carbon fibre layers all-round**
- Precision bubble for easy levelling / Height-adjustable stainless-steel feet
- Thickness 23 mm / two sizes available – **custom sizes upon request at 15% extra cost**

Item	Description	RRP
CF01	CARBOFIBRE° - 450 x 400 x 23 mm	3,200
CF02	CARBOFIBRE° - 500 x 475 x 23 mm	3,200

CARBOFIBRE° HD isolation base

- Multi-layer version for light to heavy components (up to 100 kg)
- **Dual honeycomb core w/ carbon fibre intermediate and all-round layers**
- Precision bubble for easy levelling / Height-adjustable stainless-steel feet
- Thickness 45 mm / two sizes available – **custom sizes upon request at 15% extra cost**

Item	Description	RRP
CFHD01	CARBOFIBRE° HD - 450 x 400 x 45 mm	4,000
CFHD02	CARBOFIBRE° HD - 500 x 475 x 45 mm	4,000

CARBOFIBRE° rack shelves (as option for PAGODE° MKII)

additional price – to be added to the standard rack price

- Optional single-layer shelf for PAGODE° 600/750/1120 MKII (standard or Heavy-Duty option)
- **Single honeycomb core w/ carbon fibre layers all-round**
- Thickness **18 mm** (standard) or **23 mm** (Heavy-Duty) / two sizes available
- 1120 MKII series requires 2 pcs. CF600/CF600HD shelves per level

Item	Description	RRP
CF600opt	CARBOFIBRE° 600 standard - 515 x 465 x 18 mm	1,800
CF600HDopt	CARBOFIBRE° 600 Heavy-Duty - 515 x 465 x 23 mm	2,000
CF750opt	CARBOFIBRE° 750 standard - 665 x 465 x 18 mm	2,200
CF750HDopt	CARBOFIBRE° 750 Heavy-Duty - 665 x 465 x 23 mm	2,400

CARBOFIBRE° rack shelves (retrofitable to PAGODE° MKII only)

- Retrofitable single-layer shelf for PAGODE° 600/750/1120 MKII (standard or Heavy-Duty)
- **Single honeycomb core w/ carbon fibre layers all-round**
- Thickness **18 mm** (standard) or **23 mm** (Heavy-Duty) / two sizes available
- 1120 MKII series requires 2 pcs. CF600/CF600HD shelves per level



Price List - RRP 2023 – CARBOFIBRE°



THE SCIENCE OF SOUND valid as from Oct 01, 2023

Item	Description	RRP
CF600	CARBOFIBRE° 600 standard - 515 x 465 x 18 mm	2,800
CF600HD	CARBOFIBRE° 600 Heavy-Duty - 515 x 465 x 23 mm	3,000
CF750	CARBOFIBRE° 750 standard - 665 x 465 x 18 mm	3,400
CF750HD	CARBOFIBRE° 750 Heavy-Duty - 665 x 465 x 23 mm	3,600