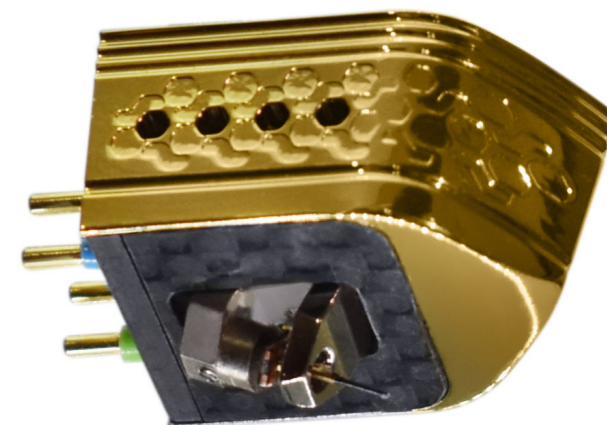
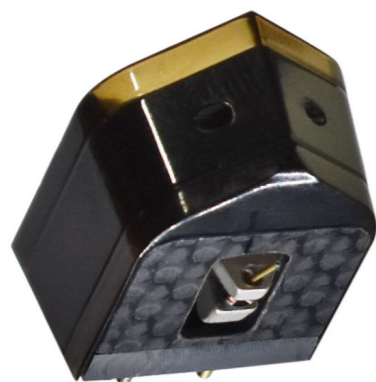


TITANIC / AUDIO

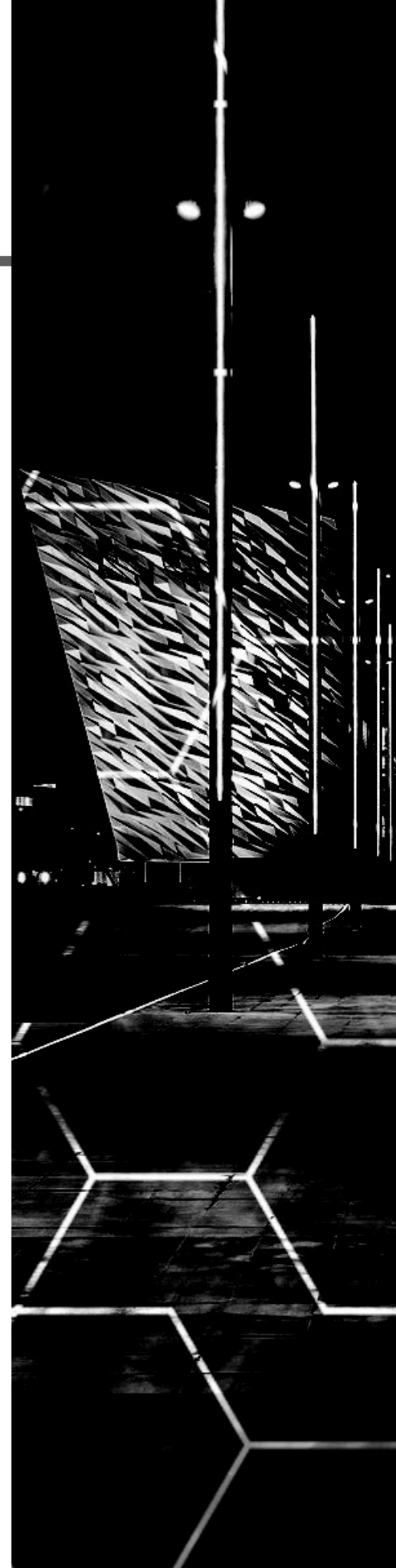
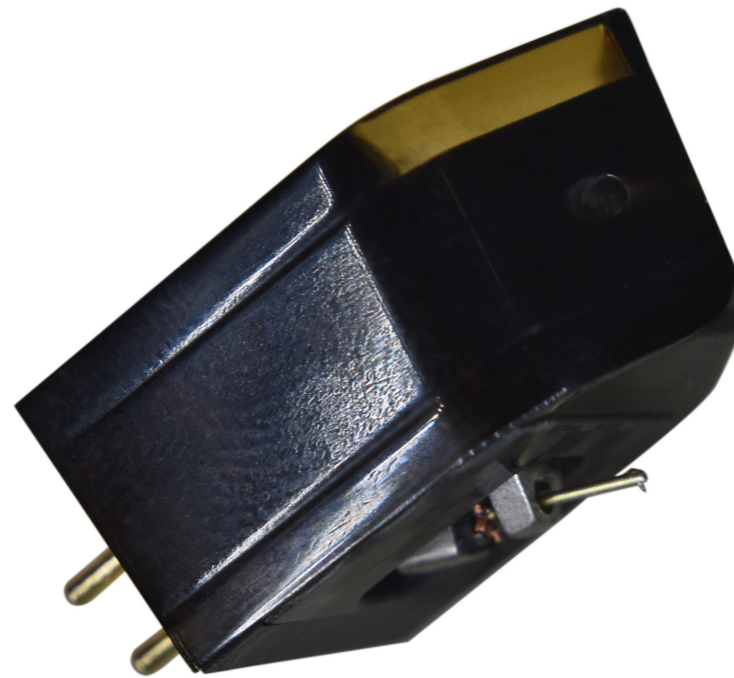
Handmade in Northern Ireland



Model - A



- Type - Stereo MC
- Body - CNC Machined Acrylic
- Stylus - Conical Jointed-diamond stylus
- Cantilever - Aluminum
- Height (mm) - 16mm
- Weight (g) - 6.1
- Coil type - 0.024mm OFC
- Output level - 0.35mV (1KHz, 5cm/s)
- Coil impedance - 7 Ω
- Frequency response - 20-20KHz \pm 1dB
- Load Impedance - \geq 100 Ω
- Recommended tracking force - 1.8g





Model - S



- Type - Stereo MC
- Body - CNC Machined Aluminum - Chrome Plated
- Stylus - Elliptical nude Diamond stylus
- Cantilever - Aluminum
- Height (mm) - 17.5
- Weight (g) - 9
- Coil type - 0.02mm OCC
- Output level - 0.36mV (1KHz, 5cm/s)
- Coil impedance - 10.5 Ω
- Frequency response - 20-20KHz \pm 1dB
- Load Impedance - \geq 150 Ω
- Recommended tracking force - 1.8g

Model - G



- Type - Stereo MC
- Body - CNC Machined Aluminum - Gold Plated
- Stylus - Micro Ridge
- Cantilever - Boron
- Height (mm) - 18mm
- Weight (g) - 9.5g
- Coil type - 0.025mm OCC
- Output level - 0.28mV (1KHz, 5cm/s)
- Coil impedance - 6 Ω
- Frequency response - 20-20KHz \pm 1dB
- Load Impedance - \geq 100
- Recommended tracking force - 1.8g

