

Price List - RRP prices 2025 - HiFi Racks

valid as from January 01, 2025

PAGODE° Signature MK II

NEW FEATURES
--- MK II ---
BETTER SOUND

- Finish: Canadian maple wood in seven colours - natural maple (P01), walnut (P02),
- makassar (P03), palisander (P04), cherry (P05), pearl white (P06) + pearl black (P07)
- Aluminum side pillars w/ wood-decor trim bars + logo insert silver-grey matt-anodized
- **Lightweight resonance-damped HCCT° honeycomb core shelves**
- Stainless-steel floor spikes with integrated floor protection plates



PAGODE° Signature MK II - Racks

(useable area WxD: upper levels 550 x 500 mm / bottom level 590 x 540 mm) – standard rack price

Order no.	Article	RRP
E11/45	45 cm high – 2 levels	\$5,940
E12/45	45 cm high – 3 levels	\$7,740
E11	60 cm high – 2 levels	\$6,120
E12	60 cm high – 3 levels	\$7,920
E13	60 cm high – 4 levels	\$9,720
E11/70	70 cm high – 2 levels	\$6,300
E12/70	70 cm high – 3 levels	\$8,100
E13/70	70 cm high – 4 levels	\$9,720
E14	85 cm high – 4 levels	\$9,900
E15	85 cm high – 5 levels	\$11,700
E14/110	110 cm high – 4 levels	\$10,620
E15/110	110 cm high – 5 levels	\$12,420
SR550	additional level	\$1,800

PAGODE° Signature MK II – side pillars + logo insert high-polished

Additional price – to be added to the standard rack price

Order no.	Article	RRP
45-2 P	side pillars 45 cm / logo insert high-polished (per pair)	\$900
60-2 P	side pillars 60 cm / logo insert high-polished (per pair)	\$900
70-2 P	side pillars 70 cm / logo insert high-polished (per pair)	\$1080
85-2 P	side pillars 85 cm / logo insert high-polished (per pair)	\$1080
110-2 P	side pillars 110 cm / logo insert high-polished (per pair)	\$1440

Price List - RRP prices 2025 - HiFi Racks

valid as from January 01, 2025

PAGODE° Signature MK II – power amplifier platforms

- Finish: Canadian maple wood in seven colours - natural maple (P01), walnut (P02), makassar (P03), palisander (P04), cherry (P05), pearl white (P06) + pearl black (P07)
- Aluminum logo insert silver-grey matt-anodized
- **Lightweight resonance-damped HCCT° honeycomb core platform**
- Stainless-steel floor spikes with integrated floor protection plates



Order no.	Article	RRP
E21-L	Platform L (540x590 mm)	\$2700
E21-Q	Platform Q (590x540 mm)	\$2700
E21-P	Logo insert high-polished	\$288

**Price List – RRP prices 2025 - HiFi Racks**

valid as from January 01, 2025

PAGODE° Master Reference MK IINEW FEATURES
--- MK II ---
BETTER SOUND

natural maple



- Finish: Canadian maple wood in seven colours - (P01), walnut (P02),
- makassar (P03), palisander (P04), cherry (P05), pearl white (P06) + pearl black (P07)
- Aluminum side pillars silver-grey matt-anodized
- **Resonance-controlled 18 mm honeycomb core shelves w/ ceramic ball coupling**
- Stainless-steel floor spikes with integrated floor protection plates

PAGODE° 600 Master Reference MK II**(usable area 515 x 465 mm) – standard rack price**

Order no.	Article	RRP
HD01/45 MR	45 cm high – 2 levels	\$12,420
HD02/45 MR	45 cm high – 3 levels	\$15,840
HD01 MR	60 cm high – 2 levels	\$12,780
HD02 MR	60 cm high – 3 levels	\$16,200
HD01/70 MR	70 cm high – 2 levels	\$13,320
HD02/70 MR	70 cm high – 3 levels	\$16,740
HD03 MR	85 cm high – 4 levels	\$20,160
HD04 MR	85 cm high – 5 levels	\$23,580
HD03/110 MR	110 cm high – 4 levels	\$21,780
HD04/110 MR	110 cm high – 5 levels	\$25,200
SR600 MR	additional level	\$3,420

PAGODE° 750 Master Reference MK II**(usable area 665 x 465 mm) - standard rack price**

Order no.	Article	RRP
HD05/45 MR	45 cm high – 2 levels	\$15,840
HD06/45 MR	45 cm high – 3 levels	\$19,800
HD05 MR	60 cm high – 2 levels	\$16,200
HD06 MR	60 cm high – 3 levels	\$20,160
HD05/70 MR	70 cm high – 2 levels	\$16,740
HD06/70 MR	70 cm high – 3 levels	\$20,700
HD07 MR	85 cm high – 4 levels	\$24,840
HD08 MR	85 cm high – 5 levels	\$28,800
HD07/110 MR	110 cm high – 4 levels	\$26,460

**Price List – RRP prices 2025 - HiFi Racks**

valid as from January 01, 2025

HD08/110 MR	110 cm high – 5 levels	\$30,420
SR750 MR	additional level	\$3,960

PAGODE° 1120 Master Reference MK II
(usable area 1035 x 465 mm) - standard rack price

Order no.	Article	RRP
HD11/45 MR	45 cm high – 2 levels	\$20,880
HD12/45 MR	45 cm high – 3 levels	\$27,900
HD11 MR	60 cm high – 2 levels	\$21,240
HD12 MR	60 cm high – 3 levels	\$28,260
HD11/70 MR	70 cm high – 2 levels	\$21,780
HD12/70 MR	70 cm high – 3 levels	\$28,800
HD13 MR	85 cm high – 4 levels	\$36,360
HD14 MR	85 cm high – 5 levels	\$43,380
HD13/110 MR	110 cm high – 4 levels	\$37,980
HD14/110 MR	110 cm high – 5 levels	\$45,000
SR1120 MR	additional level	\$7,020

Price List – RRP prices 2025 - HiFi Racks

valid as from January 01, 2025

PAGODE° Master Reference MK II – side pillars high-polished



Additional price – to be added to the standard price

order no.	Article	RRP
45-4 P	side pillars 45 cm high-polished	\$1,620
60-4 P	side pillars 60 cm high-polished	\$1,800
70-4 P	side pillars 70 cm high-polished	\$1,980
85-4 P	side pillars 85 cm high-polished	\$2,160
110-4 P	side pillars 110 cm high-polished	\$2,700

PAGODE° Master Reference MK II - wood decor trim for side pillars



Additional price – to be added to the standard price



order no.	Article	RRP
45-4 W	wood decor trim bars 45 cm	\$1,980
60-4 W	wood decor trim bars 60 cm	\$1,980
70-4 W	wood decor trim bars 70 cm	\$2,160
85-4 W	wood decor trim bars 85 cm	\$2,340
110-4 W	wood decor trim bars 110 cm	\$2,880

PAGODE° Master Reference MK II – Heavy-Duty option

as option - to be added to the standard rack price

- Higher load capacity of top-level – up to 120 kg
- **Strengthened 26 mm honeycomb core shelf w/ 5-point ceramic ball coupling**
- CERAPUC° 5-point support of top-level (HD1120MR: 10-point CERAPUC° support)
- Available for top-level only

order no.	Article	RRP
HD600MR option	Heavy-Duty 600 MR option	\$3,420



Price List – RRP prices 2025 - HiFi Racks

valid as from January 01, 2025

HD750MR option	Heavy-Duty 750 MR option	\$4,140
HD1120MR option	Heavy-Duty 1120 MR option	\$5,940

PAGODE° Master Reference MK II – power amplifier platform

- Finish: Canadian maple wood in seven colours - natural maple (P01), walnut (P02), makassar (P03), palisander (P04), cherry (P05), pearl white (P06) + pearl black (P07)
- **Resonance-controlled 18 mm honeycomb core shelf w/ ceramic ball coupling**
- Stainless-steel floor spikes with integrated floor protection plates



order no.	Article	RRP
HD09 MR	Platform 640 MR (usable area 515x465 mm)	\$4,320
HD10 MR	Platform 790 MR (usable area 665x465 mm)	\$5,400

CARBOFIBRE° shelves for racks + amp platforms (as option for pagode° MKII)

additional price – to be added to the standard rack or platform price

- Optional single-layer shelf for PAGODE° 600/750/1120 MKII (standard or Heavy-Duty option) + HD09/HD10 platforms
- **Single honeycomb core w/ carbon fibre layers all-round + ceramic ball coupling**
- Thickness **18 mm** (standard) or **23 mm** (Heavy-Duty) / two sizes available
- 1120 MKII rack series requires 2 pcs. CF600/CF600HD shelf per level

Order no.	Article	RRP
CF600opt	CARBOFIBRE° 600 standard - 515 x 465 x 18 mm (4-point)	\$1,800
CF600H Dopt	CARBOFIBRE° 600 Heavy-Duty - 515 x 465 x 23 mm (5-point)	\$2,160
CF750opt	CARBOFIBRE° 750 standard - 665 x 465 x 18 mm (4-point)	\$2,160
CF750H Dopt	CARBOFIBRE° 750 Heavy-Duty - 665 x 465 x 23 mm (5-point)	\$2,520

**Price List – RRP prices 2025 - HiFi Racks**

valid as from January 01, 2025

PAGODE° Edition MK IINEW FEATURES
--- MK II ---
BETTER SOUND

- Finish: Canadian maple wood in seven colours - natural maple (P01), walnut (P02), makassar (P03), palisander (P04), cherry (P05), pearl white (P06) + pearl black (P07)
- Aluminum side pillars silver-grey matt-anodized w/ wood-decor trim bars
- **Resonance-controlled 18 mm honeycomb core shelves w/ ceramic ball coupling**
- Stainless-steel floor spikes with integrated floor protection plates

**PAGODE° 600 Edition MK II****(usable area 515 x 465 mm) – standard rack price**

Order no.	Article	RRP
HD01/45 ED	45 cm high – 2 levels	\$15,300
HD02/45 ED	45 cm high – 3 levels	\$18,720
HD01 ED	60 cm high – 2 levels	\$15,660
HD02 ED	60 cm high – 3 levels	\$19,080
HD01/70 ED	70 cm high – 2 levels	\$16,200
HD02/70 ED	70 cm high – 3 levels	\$19,440
HD03 ED	85 cm high – 4 levels	\$23,760
HD04 ED	85 cm high – 5 levels	\$27,180
HD03/110 ED	110 cm high – 4 levels	\$25,380
HD04/110 ED	110 cm high – 5 levels	\$27,180
SR600 ED	additional level	\$3,420

PAGODE° 750 Edition MK II**(usable area 665 x 465 mm) - standard rack price**

Order no.	Article	RRP
HD05/45 ED	45 cm high – 2 levels	\$19,440
HD06/45 ED	45 cm high – 3 levels	\$23,580
HD05 ED	60 cm high – 2 levels	\$19,980
HD06 ED	60 cm high – 3 levels	\$23,940
HD05/70 ED	70 cm high – 2 levels	\$20,520
HD06/70 ED	70 cm high – 3 levels	\$24,480
HD07 ED	85 cm high – 4 levels	\$28,620
HD08 ED	85 cm high – 5 levels	\$32,580
HD07/110 ED	110 cm high – 4 levels	\$30,240
HD08/110 ED	110 cm high – 5 levels	\$34,200

**Price List – RRP prices 2025 - HiFi Racks**

valid as from January 01, 2025

SR750 ED	additional level	\$3,960
----------	------------------	----------------

PAGODE° 1120 Edition MK II
(usable area 1035 x 465 mm) - standard rack price

Order no.	Article	RRP
HD11/45 ED	45 cm high – 2 levels	\$24,480
HD12/45 ED	45 cm high – 3 levels	\$31,500
HD11 ED	60 cm high – 2 levels	\$24,840
HD12 ED	60 cm high – 3 levels	\$31,860
HD11/70 ED	70 cm high – 2 levels	\$25,380
HD12/70 ED	70 cm high – 3 levels	\$32,400
HD13 ED	85 cm high – 4 levels	\$39,960
HD14 ED	85 cm high – 5 levels	\$46,980
HD13/110 ED	110 cm high – 4 levels	\$41,580
HD14/110 ED	110 cm high – 5 levels	\$48,600
SR1120 ED	additional level	\$7,020

Price List – RRP prices 2025 - HiFi Racks

valid as from January 01, 2025

PAGODE° Edition MK II – side pillars + logo insert high-polished additional price – to be added to the standard price

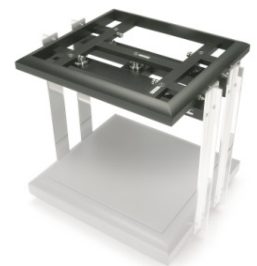


Order no.	Article	RRP
45-4 P	side pillars 45 cm/logo insert high-polished	\$1,800
60-4 P	side pillars 60 cm/logo insert high-polished	\$1,980
70-4 P	side pillars 70 cm/logo insert high-polished	\$2,160
85-4 P	side pillars 85 cm/logo insert high-polished	\$2,520
110-4 P	side pillars 110 cm/logo insert high-polished	\$3,060

PAGODE° Edition MK II – Heavy-Duty option

as option - to be added to the standard rack price

- Higher load capacity of top-level – up to 120 kg
- **Strengthened 26 mm honeycomb core shelf w/ 5-point ceramic ball coupling**
- CERAPUC° 5-point support of top-level (HD1120: 10-point CERAPUC° support)
- Available for top-level only



Order no.	Article	RRP
HD600ED option	Heavy-Duty 600 ED option	\$3,420
HD750ED option	Heavy-Duty 750 ED option	\$4,140
HD1120ED option	Heavy-Duty 1120 ED option	\$5,940

PAGODE° Edition MK II – power amplifier platform



- Finish: Canadian maple wood in seven colours - natural maple (P01), walnut (P02), makassar (P03), palisander (P04), cherry (P05), pearl white (P06) + pearl black (P07)
- **Resonance- controlled 18 mm honeycomb core shelf w/ ceramic ball coupling**
- Stainless-steel floor spikes with integrated floor protection plate



Order no.	Article	RRP
HD09 ED-L	Platform 640-L (usable area lengthwise 465 x 515 mm)	\$5,400
HD09 ED-Q	Platform 640-Q (usable area crosswise 515 x 465 mm)	\$5,400
HD10 ED-L	Platform 790-L (usable area lengthwise 465 x 665 mm)	\$6,480
HD10 ED-Q	Platform 790-Q (usable area crosswise 665 x 465 mm)	\$6,480
HD09/10-P	Metal logo insert high-polished (additional price)	\$360

**Price List – RRP prices 2025 - HiFi Racks**

valid as from January 01, 2025

CARBOFIBRE° shelves for racks + amp platforms (as option for pagode° MKII)**additional price – to be added to the standard rack or platform price**

- Optional single-layer shelf for PAGODE° 600/750/1120 MKII (standard or Heavy-Duty option) + HD09/HD10 platforms
- **Single honeycomb core w/ carbon fibre layers all-round + ceramic ball coupling**
- Thickness **18 mm** (standard) or **23 mm** (Heavy-Duty) / two sizes available
- 1120 MKII rack series requires 2 pcs. CF600/CF600HD shelf per level

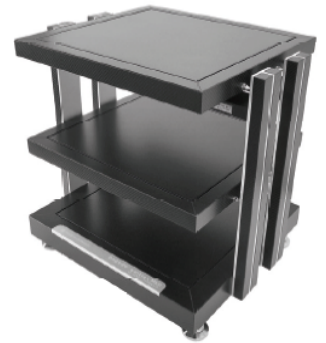
Order no.	Article	RRP
CF600opt	CARBOFIBRE° 600 standard - 515 x 465 x 18 mm (4-point)	\$1,800
CF600H Dopt	CARBOFIBRE° 600 Heavy-Duty - 515 x 465 x 23 mm (5-point)	\$2,160
CF750opt	CARBOFIBRE° 750 standard - 665 x 465 x 18 mm (4-point)	\$2,160
CF750H Dopt	CARBOFIBRE° 750 Heavy-Duty - 665 x 465 x 23 mm (5-point)	\$2,520

**Price List – RRP prices 2025 - HiFi Racks**

valid as from January 01, 2025

**PAGODE° MKII CARBON Edition**

- Finish: **CARBON** clad solid Canadian maple wood crossbars and side pillar decor trim (colour code: **P08 carbon**) frames,
- Resonance-damped 18 mm **Carbofibre°** shelves w/ ceramic ball coupling
- Metal logo insert + alu side pillars silver-grey anodized w/ CARBON decor trim bars
- **CERABASE° classic** interface feet as standard

**PAGODE° 600 MKII CARBON Edition****(usable area 515 x 465 mm) – standard rack price**

Order no.	Article	RRP
HD01/45 ED	45 cm high – 2 levels	\$34,920
HD02/45 ED	45 cm high – 3 levels	\$41,940
HD01 ED	60 cm high – 2 levels	\$36,540
HD02 ED	60 cm high – 3 levels	\$43,560
HD01/70 ED	70 cm high – 2 levels	\$38,160
HD02/70 ED	70 cm high – 3 levels	\$45,180
HD03 ED	85 cm high – 4 levels	\$52,740
HD04 ED	85 cm high – 5 levels	\$59,760
HD03/110 ED	110 cm high – 4 levels	\$55,980
HD04/110 ED	110 cm high – 5 levels	\$63,000
SR600 ED	additional level	\$7,020

PAGODE° 750 MKII CARBON Edition**(usable area 665 x 465 mm) - standard rack price**

Order no.	Article	RRP
HD05/45 ED	45 cm high – 2 levels	\$39,600
HD06/45 ED	45 cm high – 3 levels	\$48,420
HD05 ED	60 cm high – 2 levels	\$41,400
HD06 ED	60 cm high – 3 levels	\$50,220
HD05/70 ED	70 cm high – 2 levels	\$43,380
HD06/70 ED	70 cm high – 3 levels	\$52,200
HD07 ED	85 cm high – 4 levels	\$61,560
HD08 ED	85 cm high – 5 levels	\$70,380

Price List – RRP prices 2025 - HiFi Racks

valid as from January 01, 2025

HD07/110 ED	110 cm high – 4 levels	\$65,340
HD08/110 ED	110 cm high – 5 levels	\$74,160
SR750 ED	additional level	\$8,820

PAGODE° 1120 MKII CARBON Edition (usable area 1035 x 465 mm) - standard rack price



Order no.	Article	RRP
HD11/45 ED	45 cm high – 2 levels	\$55,800
HD12/45 ED	45 cm high – 3 levels	\$69,300
HD11 ED	60 cm high – 2 levels	\$57,960
HD12 ED	60 cm high – 3 levels	\$71,460
HD11/70 ED	70 cm high – 2 levels	\$60,120
HD12/70 ED	70 cm high – 3 levels	\$73,620
HD13 ED	85 cm high – 4 levels	\$87,660
HD14 ED	85 cm high – 5 levels	\$101,160
HD13/110 ED	110 cm high – 4 levels	\$91,980
HD14/110 ED	110 cm high – 5 levels	\$105,480
SR1120 ED	additional level	\$13,500

PAGODE° MKII CARBON Edition – side pillars + logo insert high-polished additional price – to be added to the standard price

Order no.	Article	RRP
45-4 P	side pillars 45 cm/logo insert high-polished	\$1,800
60-4 P	side pillars 60 cm/logo insert high-polished	\$1,980
70-4 P	side pillars 70 cm/logo insert high-polished	\$2,160
85-4 P	side pillars 85 cm/logo insert high-polished	\$2,520
110-4 P	side pillars 110 cm/logo insert high-polished	\$3,060

PAGODE° MKII CARBON Edition – Heavy-Duty option

as option - to be added to the standard rack price

- Higher load capacity top-level – up to 120 kg
- Strengthened 23 mm **Carbofibre°** shelf w/ 5-point ceramic ball coupling
- **CERAPUC°** 5-point support of top-level (HD1120: 10-point CERAPUC° support)
- Available for top-level only

Order no.	Article	RRP
HD600ED option	Heavy-Duty 600 ED option	\$5,580

**Price List – RRP prices 2025 - HiFi Racks**

valid as from January 01, 2025

HD750ED option	Heavy-Duty 750 ED option	\$6,660
HD1120ED option	Heavy-Duty 1120 ED option	\$8,820

**PAGODE° MKII CARBON Edition – power amplifier platform**

- Finish: **CARBON** clad solid Canadian maple platform frame (colour code: **P08 carbon**)
- Resonance-damped 18 mm **Carbofibre°** shelf w/ ceramic ball coupling
- Metal logo insert silver-grey anodized
- **CERABASE° compact** interface feet as standard

Order no.	Article	RRP
HD09 ED-L	Platform 640-L (usable area lengthwise 465 x 515 mm)	\$11,880
HD09 ED-Q	Platform 640-Q (usable area crosswise 515 x 465 mm)	\$11,880
HD10 ED-L	Platform 790-L (usable area lengthwise 465 x 665 mm)	\$13,860
HD10 ED-Q	Platform 790-Q (usable area crosswise 665 x 465 mm)	\$13,860
HD09/10-P	Metal logo insert high-polished (additional price)	\$360

CARBOFIBRE° XL rack shelves (as option for PAGODE° MKII)**additional price – to be added to the standard rack price**

- Optional double-layer carbofibre XL shelf for PAGODE° 600/750/1120 MKII (for standard or Heavy-Duty levels)
- **Dual honeycomb core w/ carbofibre layers all-round + ceramic ball coupling**
- Thickness **41 mm** (for standard or Heavy-Duty levels) / increases useable shelf area (i.e. for big turntables)
- 1120 MKII series requires 1 pc double-wide DBCF1120 shelf or 2 pcs. DBCF600 shelf per level

Order no.	Article	RRP
DBCF600opt	CARBOFIBRE° 600 XL - 600 x 550 x 41 mm (5-point)	\$2,700
DBCF750opt	CARBOFIBRE° 750 XL - 750 x 550 x 41 mm (5-point)	\$3,060
DBCF1120-1 opt	CARBOFIBRE° 1120 XL single - 1120 x 550 x 41 mm (1 pc) (10-point)	\$180
DBCF1120-2 opt	CARBOFIBRE° 1120 XL double – 560 x 550 x 41 mm (2 pcs) (2x 5-point)	\$5,220

Price List – RRP prices 2025 – CARBOFIBRE° bases



finite elemente

THE SCIENCE OF SOUND

valid as from January 01, 2025

CARBOFIBRE° bases



CARBOFIBRE° SD – isolation base

- Single-layer version for light to medium-weight components (up to 50 kg)
- **Single honeycomb core w/ carbofibre layers all-round**
- Precision bubble level for easy levelling / Height-adjustable stainless-steel feet
- **Thickness 23/45 mm** (excl./incl. feet) / two sizes available – **custom sizes at 15% extra cost**



Order no.	Article	RRP
CF01	CARBOFIBRE° - 450 x 400 x 23 mm	\$3,240
CF02	CARBOFIBRE° - 500 x 475 x 23 mm	\$3,420

CARBOFIBRE° HD – isolation base

- Multi-layer version for light to heavy-weight components (up to 100 kg)
- **Dual honeycomb core w/ single carbofibre intermediate and all-round layers**
- Precision bubble level for easy and accurate levelling / Height-adjustable stainless-steel feet
- **Thickness 45/67 mm** (excl./incl. feet) / two sizes available – **custom sizes at 15% extra cost**



Order no.	Article	RRP
CFHD01	CARBOFIBRE° HD - 450 x 400 x 45 mm	\$4,140
CFHD02	CARBOFIBRE° HD - 500 x 475 x 45 mm	\$4,320

CARBOFIBRE° Statement – Reference isolation base

- Multi-layer version for medium to heavy-weight components (up to 350 kg)
- **Multi honeycomb core w/ multi carbofibre intermediate and all-round layers**
- Precision cross bubble level for easy and accurate levelling
- 4 or 5-feet versions available (5th foot retrofittable at any time)
- **Cerabase classic** ceramic ball interface feet as standard
- Recommended especially for power amplifiers, analogue turntables etc.
- **Thickness 85/115 mm** (excl./incl. feet) / one standard size available – **custom sizes at no extra cost**



Standard size

Order no.	Article	RRP
CFST-4	CARBOFIBRE° Statement - 525 x 575 x 85 mm (4-feet)	\$15,300
CFST-5	CARBOFIBRE° Statement - 525 x 575 x 85 mm (5-feet)	\$15,660

Custom size (made to order)

Price List – RRP prices 2025 – CARBOFIBRE° bases



THE SCIENCE OF SOUND valid as from January 01, 2025

Order no.	Article	RRP
CFST-4	CARBOFIBRE° Statement - custom size x 85 mm (4-feet)	\$15,300
CFST-5	CARBOFIBRE° Statement - custom size x 85 mm (5-feet)	\$15,660

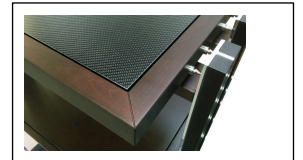
CARBOFIBRE° rack shelves

CARBOFIBRE° rack shelves (as option for PAGODE° MKII)

additional price – to be added to the standard rack or platform price

- Optional single-layer shelf for PAGODE° 600/750/1120 MKII (standard or Heavy-Duty option) + HD09/HD10 platforms
- **Single-layer honeycomb core w/ carbofibre layers all-round + ceramic ball coupling**
- Thickness **18 mm** (standard) or **23 mm** (Heavy-Duty) / two sizes available
- 1120 MKII rack series requires 2 pcs. CF600 or CF600HD shelves per level

Order no.	Article	RRP
CF600opt	CARBOFIBRE° 600 standard - 515 x 465 x 18 mm (4-point)	\$1,800
CF600HDopt	CARBOFIBRE° 600 Heavy-Duty - 515 x 465 x 23 mm (5-point)	\$2,160
CF750opt	CARBOFIBRE° 750 standard - 665 x 465 x 18 mm (4-point)	\$2,160
CF750HDopt	CARBOFIBRE° 750 Heavy-Duty - 665 x 465 x 23 mm (5-point)	\$2,520



CARBOFIBRE° rack shelves (retrofitable to PAGODE° MKII only)

- Retrofittable single-layer shelf for PAGODE° 600/750/1120 MKII (standard or Heavy-Duty)
- **Single honeycomb core w/ carbofibre layers all-round + ceramic ball coupling**
- Thickness **18 mm** (standard) or **23 mm** (Heavy-Duty) / two sizes available
- 1120 MKII series requires 2 pcs. CF600 or CF600HD shelves per level

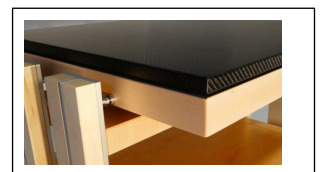
Order no.	Article	RRP
CF600	CARBOFIBRE° 600 standard - 515 x 465 x 18 mm (4-point)	\$3,060
CF600HD	CARBOFIBRE° 600 Heavy-Duty - 515 x 465 x 23 mm (5-point)	\$3,420
CF750	CARBOFIBRE° 750 standard - 665 x 465 x 18 mm (4-point)	\$3,600
CF750HD	CARBOFIBRE° 750 Heavy-Duty - 665 x 465 x 23 mm (5-point)	\$3,960



CARBOFIBRE° XL rack shelves (as option for PAGODE° MKII)

additional price – to be added to the standard rack price

- Optional double-layer carbofire XL shelf for PAGODE° 600/750/1120 MKII (for standard or Heavy-Duty levels)



Price List – RRP prices 2025 – CARBOFIBRE° rack shelves



finite elemente

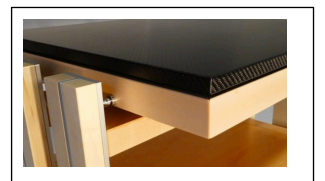
THE SCIENCE OF SOUND

valid as from January 01, 2025

• Dual honeycomb core w/ carbofibre layers all-round + ceramic ball coupling

- Thickness **41 mm** (for standard or Heavy-Duty levels) / **increases useable shelf area** (i.e. for big turntables)
- 1120 MKII series requires 1 pc double-wide DBCF1120 shelf or 2 pcs. DBCF600 shelf per level

Order no.	Article	RRP
DBCF600opt	CARBOFIBRE° 600 XL - 600 x 550 x 41 mm (5-point)	\$4,500
DBCF750opt	CARBOFIBRE° 750 XL - 750 x 550 x 41 mm (5-point)	\$5,220
DBCF1120-1 opt	CARBOFIBRE° 1120 XL single - 1120 x 550 x 41 mm (1 pc) (10-point)	\$8,100
DBCF1120-2 opt	CARBOFIBRE° 1120 XL double – 560 x 550 x 41 mm (2 pcs) (2x 5-point)	\$8,820



CARBOFIBRE° XL rack shelves (retrofittable to PAGODE° MKII only)

- Retrofittable double-layer carbofibre XL shelf for PAGODE° 600/750/1120 MKII (for standard or Heavy-Duty levels)
- **Dual honeycomb core w/ carbofibre layers all-round + ceramic ball coupling**
- Thickness **41 mm** (for standard or Heavy-Duty levels) / **increases useable shelf area** (i.e. for big turntables)
- 1120 MKII series requires 1 pc double-wide DBCF1120 shelf or 2 pcs. DBCF600 shelf per level

Order no.	Article	RRP
DBCF600	CARBOFIBRE° 600 XL - 600 x 550 x 41 mm (5-point)	\$5,940
DBCF750	CARBOFIBRE° 750 XL - 750 x 550 x 41 mm (5-point)	\$6,660
DBCF1120-1	CARBOFIBRE° 1120 XL single - 1120 x 550 x 41 mm (1 pc) (10-point)	\$10,980
DBCF1120-2	CARBOFIBRE° 1120 XL double – 560 x 550 x 41 mm (2 pcs) (2x 5-point)	\$11,700

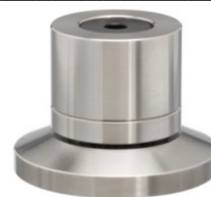


CERABASE° classic

≡ MADE IN GERMANY

Load capacity: 500 kg (set of 4)

- **stainless-steel**, screwable, height-adjustable
- incl. wooden box + assembly accessories



Order no.	Article	RRP
cbs-4	Cerabase classic 4 [set of 4]	\$1,620
cbs-3	Cerabase classic 3 [set of 3]	\$1,260

CERABASE° compact

≡ MADE IN GERMANY

Load capacity: 500 kg (set of 4)

- **stainless-steel**, screwable, height-adjustable
- incl. wooden box + assembly accessories



Order no.	Article	RRP
cmp-4	Cerabase compact 4 [set of 4]	\$1,440
cmp-3	Cerabase compact 3 [set of 3]	\$1,080

CERABASE° slimline

≡ MADE IN GERMANY

Load capacity: 500 kg (set of 4)

- **stainless-steel**, screwable, **NOT** height-adjustable
- incl. wooden box + assembly accessories



Order no.	Article	RRP
slm-4	Cerabase slimline 4 [set of 4]	\$1,080
slm-3	Cerabase slimline 3 [set of 3]	\$900

CERAPUC°

≡ MADE IN GERMANY

Load capacity: 300 kg (set of 4)

- **stainless-steel**, screwable, height-adjustable
- incl. wooden box + assembly accessories



Order no.	Article	RRP
cpc-4	Cerapuc 4 [set of 4]	\$1,080
cpc-3	Cerapuc 3 [set of 3]	\$900

Price List - RRP prices 2025 - HiFi Racks

valid as from January 01, 2025

CERABALL°

≡ MADE IN GERMANY

Load capacity: 200 kg (set of 4)

- **stainless-steel**, screwable, height-adjustable
- incl. wooden box + assembly accessories



Item no.	Article	
cb-4	Ceraball 4 [set of 4]	\$720
cb-3	Ceraball 3 [set of 3]	\$540

CERABASE° B&W D3/D4

≡ MADE IN GERMANY

Special Cerabase version for **Bowers & Wilkins 800 D3 + D4 series**

- suitable for 801D4, 802D4 & 803D4 Diamond
- suitable for 800D3, 802D3 & 803D3 Diamond
- stainless-steel, screwable, height-adjustable
- incl. wooden box



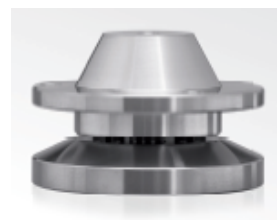
Item no.	Article	
cbs-4 B&W D3/D4	Cerabase B&W D3/D4 [set of 4]	\$1,800

CERABASE° B&W D2

≡ MADE IN GERMANY

Special Cerabase version for **B&W 800 D2 series**

- suitable for 800D2, 801D2, 802D2, 800D2 & 802D2 Diamond
- stainless-steel, screwable, height-adjustable
- incl. wooden box



Item no.	Article	
cbs-4 B&W D2	Cerabase B&W D2 [set of 4]	\$1,800

CERA° thread adapters

≡ MADE IN GERMANY

Suitable for **Cerapuc + Ceraball**

- stainless-steel
- overall length: 35 mm
- thread lengths: M10/M8 = 25 mm / M8 = 10 mm
- four different thread pitches available:



Price List - RRP prices 2025 - HiFi Racks

valid as from January 01, 2025

- a) **M10x1,50 mm** (for i.e. Magico, Vienna Acoustics)
- b) **M10x1,25 mm** (for i.e. Monitor Audio)
- c) **M10x1,00 mm** (for i.e. Paradigm)
- d) **M8x1,00 mm** (for i.e. KEF)

Item no.	Article	
apt M10x1,50	Adapter M10x1,50 [set of 4] for i.e. Magico, Vienna Acoustics	\$180
apt M10x1,25	Adapter M10x1,25 [set of 4] for i.e. Monitor Audio	\$180
apt M10x1,00	Adapter M10x1,00 [set of 4] for i.e. Paradigm	\$180
apt M8x1,00	Adapter M8x1,00 [set of 4] for i.e. KEF	\$180